

## **West Saanich Rd between Hartland Ave and Ave And Prospect Lake Rd**

**March 31, 2019 To April 05, 2019**



The data presented here is for information purposes only and should not be considered authoritative for construction, geotechnical, engineering, navigational, legal, or other site-specific uses. The information shared is owned by the Transportation Division of the Engineering Department at the District of Saanich. Accuracy is not guaranteed.

Start Date: 1-Apr-19  
 Start Time: 0:00  
 Station ID: M0040-04

**Location 1: West Saanich Rd between Hartland Ave and Ave And Prospect Lake Rd**

Note: Hartland Ave and Prospect Lake Rd

DATE:	April 1, 2019		April 2, 2019		April 3, 2019		April 4, 2019		April 5, 2019		WK AVG		WK AVG	HOURLY
	MON		TUE		WED		THURS		FRI		NB	SB	CH 1+2	%
Time:	NB	SB	NB	SB	NB	SB	NB	SB	NB	SB	NB	SB		
12-1 AM					15	7	17	10	16	9	16	9	25	0.2%
1-2 AM					8	3	5	2	9	3	7	3	10	0.1%
2-3 AM					6	4	5	2	8	4	6	3	10	0.1%
3-4 AM					6	7	3	5	1	4	3	5	9	0.1%
4-5 AM					17	11	14	13	14	8	15	11	26	0.2%
5-6 AM					49	57	50	41	48	47	49	48	97	0.8%
6-7 AM					262	197	241	194	273	199	259	197	455	3.6%
7-8 AM					321	530	315	531	322	542	319	534	854	6.7%
8-9 AM					417	579	369	557	380	573	389	570	958	7.5%
9-10 AM					413	407	374	430	377	424	388	420	808	6.4%
10-11 AM					395	385	336	375	345	394	359	385	743	5.8%
11-12 PM					383	437	346	402	412	386	380	408	789	6.2%
12-1 PM					413	424	385	403	426	462	408	430	838	6.6%
1-2 PM					430	417	428	436	380	460	413	438	850	6.7%
2-3 PM					439	476	421	459	439	466	433	467	900	7.1%
3-4 PM					530	684	499	660	590	666	540	670	1210	9.5%
4-5 PM					655	679	613	671	755	677	674	676	1350	10.6%
5-6 PM					565	489	548	459	609	548	574	499	1073	8.4%
6-7 PM					309	336	301	286	319	327	310	316	626	4.9%
7-8 PM					209	199	207	198	223	274	213	224	437	3.4%
8-9 PM					178	116	151	114	193	155	174	128	302	2.4%
9-10 PM					110	62	109	79	153	91	124	77	201	1.6%
10-11 PM					68	34	68	32	78	26	71	31	102	0.8%
11-12 AM					31	10	40	15	41	20	37	15	52	0.4%
<b>LANES</b>					<b>6229</b>	<b>6550</b>	<b>5845</b>	<b>6374</b>	<b>6411</b>	<b>6765</b>	<b>6162</b>	<b>6563</b>	<b>12725</b>	<b>100.0%</b>
<b>TOTAL</b>					<b>12779</b>		<b>12219</b>		<b>13176</b>		<b>12730</b>			
	MON		TUE		WED		THURS		FRI		WK AVG			

PEAK HOUR					TOTAL VEHICALS-PEAK PERIODS		2 HOUR PEAK INTERVALS			
MAX. 7 - 9 am PEAK HOUR	958	⇒	7.5%	between 8-9 AM	5861	⇒ 6 HR TOTAL	<b>2 HR AM (7 - 9 AM)</b>			
MAX. 7 - 11 am PEAK HOUR	958	⇒	7.5%	between 8-9 AM	4235	⇒ 4 HR TOTAL	VEH / HR	VEH / 2HR	2 HR %	
							7-8 AM	854	1812	14.2%
							8-9 AM	958		
MAX. 11 am - 1 pm PEAK HOUR	838	⇒	6.6%	between 12-1 PM	<b>24 HOUR FACTORS</b>					
MAX. 11 am - 3 pm PEAK HOUR	900	⇒	7.1%	between 2-3 PM						
MAX. 4 - 6 pm PEAK HOUR	1350	⇒	10.6%	between 4-5 PM	2.17	⇒ 6-24 HR FACT.	<b>2 HR NOON (11 - 1 PM)</b>			
MAX. 3 - 6 pm PEAK HOUR	1350	⇒	10.6%	between 4-5 PM	3.00	⇒ 4-24 HR FACT.	VEH / HR	VEH / 2HR	2 HR %	
							11-12 PM	789	1626	12.8%
							12-1 PM	838		
							<b>2 HR PM (4 - 6 PM)</b>			
							VEH / HR	VEH / 2HR	2 HR %	
							4-5 PM	1350	2423	19.0%
							5-6 PM	1073		

# West Saanich Rd between Hartland Ave and Ave And Prospect Lake Rd

Northbound

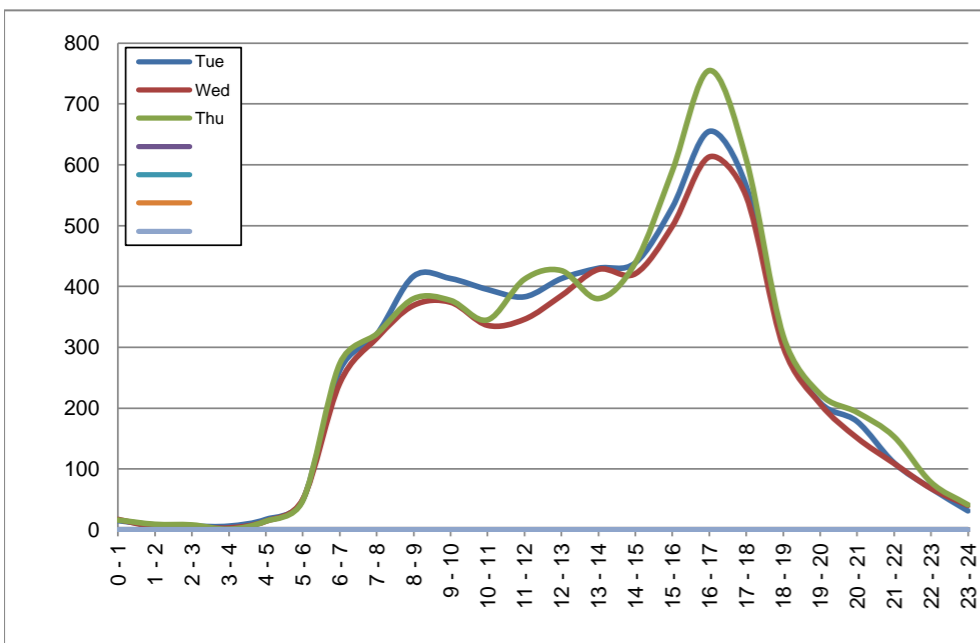
April 2, 2019 to April 4, 2019

## Hourly Volumes

Time Period	Tue	Wed	Thu			
	Apr 2	Apr 3	Apr 4			
0 - 1	15	17	16			
1 - 2	8	5	9			
2 - 3	6	5	8			
3 - 4	6	3	1			
4 - 5	17	14	14			
5 - 6	49	50	48			
6 - 7	262	241	273			
7 - 8	321	315	322			
8 - 9	417	369	380			
9 - 10	413	374	377			
10 - 11	395	336	345			
11 - 12	383	346	412			
12 - 13	413	385	426			
13 - 14	430	428	380			
14 - 15	439	421	439			
15 - 16	530	499	590			
16 - 17	655	613	755			
17 - 18	565	548	609			
18 - 19	309	301	319			
19 - 20	209	207	223			
20 - 21	178	151	193			
21 - 22	110	109	153			
22 - 23	68	68	78			
23 - 24	31	40	41			
<b>Day Total</b>	<b>6229</b>	<b>5845</b>	<b>6411</b>			

## 15-Minute Volumes

Time Start	Tue	Wed	Thu				Time Start	Tue	Wed	Thu			
	Apr 2	Apr 3	Apr 4					Apr 2	Apr 3	Apr 4			
0:00	7	6	3				12:00	102	129	113			
0:15	6	5	7				12:15	99	90	107			
0:30	1	3	4				12:30	107	85	113			
0:45	1	3	2				12:45	105	81	93			
1:00	1	1	2				13:00	89	96	98			
1:15	2	1	1				13:15	120	110	90			
1:30	3	2	3				13:30	123	110	89			
1:45	2	1	3				13:45	98	112	103			
2:00	1	1	3				14:00	117	103	108			
2:15	2	0	0				14:15	104	96	116			
2:30	1	1	1				14:30	95	113	101			
2:45	2	3	4				14:45	123	109	114			
3:00	1	0	0				15:00	109	121	134			
3:15	1	0	0				15:15	148	107	150			
3:30	2	0	0				15:30	118	136	127			
3:45	2	3	1				15:45	155	135	179			
4:00	2	1	0				16:00	169	144	208			
4:15	4	3	3				16:15	160	149	185			
4:30	4	4	3				16:30	173	167	197			
4:45	7	6	8				16:45	153	153	165			
5:00	7	5	8				17:00	163	153	157			
5:15	8	9	7				17:15	137	135	164			
5:30	11	15	13				17:30	136	142	126			
5:45	23	21	20				17:45	129	118	162			
6:00	35	26	32				18:00	81	89	84			
6:15	58	56	62				18:15	95	77	75			
6:30	84	79	98				18:30	65	70	79			
6:45	85	80	81				18:45	68	65	81			
7:00	58	74	76				19:00	61	46	63			
7:15	67	66	70				19:15	59	58	65			
7:30	89	86	64				19:30	46	53	55			
7:45	107	89	112				19:45	43	50	40			
8:00	88	76	101				20:00	43	42	47			
8:15	94	99	68				20:15	48	36	61			
8:30	114	87	98				20:30	40	33	44			
8:45	121	107	113				20:45	47	40	41			
9:00	108	98	112				21:00	23	29	31			
9:15	93	93	88				21:15	36	19	41			
9:30	91	101	84				21:30	24	29	44			
9:45	121	82	93				21:45	27	32	37			
10:00	102	84	91				22:00	22	19	20			
10:15	98	97	80				22:15	18	17	27			
10:30	105	71	90				22:30	14	16	21			
10:45	90	84	84				22:45	14	16	10			
11:00	97	87	122				23:00	12	13	12			
11:15	94	82	109				23:15	10	12	15			
11:30	101	85	95				23:30	2	7	6			
11:45	91	92	86				23:45	7	8	8			



Site notes:

# West Saanich Rd between Hartland Ave and Ave And Prospect Lake Rd

Southbound

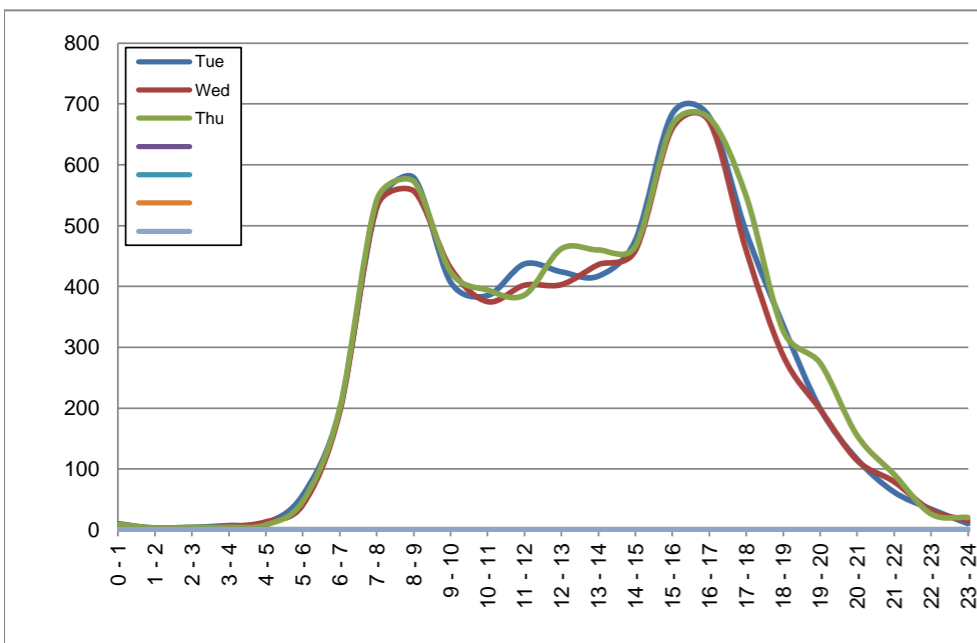
April 2, 2019 to April 4, 2019

## Hourly Volumes

Time Period	Tue	Wed	Thu			
	Apr 2	Apr 3	Apr 4			
0 - 1	7	10	9			
1 - 2	3	2	3			
2 - 3	4	2	4			
3 - 4	7	5	4			
4 - 5	11	13	8			
5 - 6	57	41	47			
6 - 7	197	194	199			
7 - 8	530	531	542			
8 - 9	579	557	573			
9 - 10	407	430	424			
10 - 11	385	375	394			
11 - 12	437	402	386			
12 - 13	424	403	462			
13 - 14	417	436	460			
14 - 15	476	459	466			
15 - 16	684	660	666			
16 - 17	679	671	677			
17 - 18	489	459	548			
18 - 19	336	286	327			
19 - 20	199	198	274			
20 - 21	116	114	155			
21 - 22	62	79	91			
22 - 23	34	32	26			
23 - 24	10	15	20			
<b>Day Total</b>	<b>6550</b>	<b>6374</b>	<b>6765</b>			

## 15-Minute Volumes

Time Start	Tue	Wed	Thu				Time Start	Tue	Wed	Thu			
	Apr 2	Apr 3	Apr 4					Apr 2	Apr 3	Apr 4			
0:00	5	1	3				12:00	101	103	114			
0:15	1	3	3				12:15	99	87	126			
0:30	0	2	1				12:30	113	99	108			
0:45	1	4	2				12:45	111	114	114			
1:00	2	0	0				13:00	95	90	113			
1:15	0	0	1				13:15	114	117	121			
1:30	1	2	1				13:30	109	116	117			
1:45	0	0	1				13:45	99	113	109			
2:00	3	1	1				14:00	119	107	115			
2:15	0	0	1				14:15	113	111	106			
2:30	0	0	0				14:30	105	121	134			
2:45	1	1	2				14:45	139	120	111			
3:00	2	0	1				15:00	131	138	152			
3:15	2	2	1				15:15	155	163	140			
3:30	1	2	1				15:30	223	188	198			
3:45	2	1	1				15:45	175	171	176			
4:00	1	1	1				16:00	161	168	167			
4:15	3	5	2				16:15	171	165	171			
4:30	4	4	2				16:30	163	170	163			
4:45	3	3	3				16:45	184	168	176			
5:00	5	7	3				17:00	134	139	172			
5:15	11	7	9				17:15	163	134	160			
5:30	22	14	15				17:30	97	107	115			
5:45	19	13	20				17:45	95	79	101			
6:00	30	32	32				18:00	99	98	107			
6:15	36	46	30				18:15	69	66	77			
6:30	65	53	70				18:30	92	69	75			
6:45	66	63	67				18:45	76	53	68			
7:00	103	118	109				19:00	69	47	80			
7:15	124	113	113				19:15	44	53	71			
7:30	136	122	145				19:30	46	53	66			
7:45	167	178	175				19:45	40	45	57			
8:00	152	147	165				20:00	35	42	46			
8:15	156	158	154				20:15	31	21	45			
8:30	152	141	135				20:30	32	21	38			
8:45	119	111	119				20:45	18	30	26			
9:00	102	102	103				21:00	14	31	19			
9:15	115	117	120				21:15	19	24	19			
9:30	96	104	106				21:30	14	12	38			
9:45	94	107	95				21:45	15	12	15			
10:00	96	99	109				22:00	12	10	4			
10:15	98	85	96				22:15	7	6	7			
10:30	98	102	92				22:30	9	11	8			
10:45	93	89	97				22:45	6	5	7			
11:00	100	104	82				23:00	3	1	5			
11:15	104	92	92				23:15	1	7	7			
11:30	113	112	109				23:30	4	7	4			
11:45	120	94	103				23:45	2	0	4			



Site notes:

# Vehicle Speed Summary

Saanich Engineering Department

Count Id: [M0040-04](#)

Filename: [West Saanich Rd between Hartland Ave and Ave And Prospect Lake Rd-Apr-2019.xlsm](#)

**Location:** West Saanich Rd between Hartland Ave and Ave And Prospect Lake Rd

Note: Hartland Ave and Prospect Lake Rd

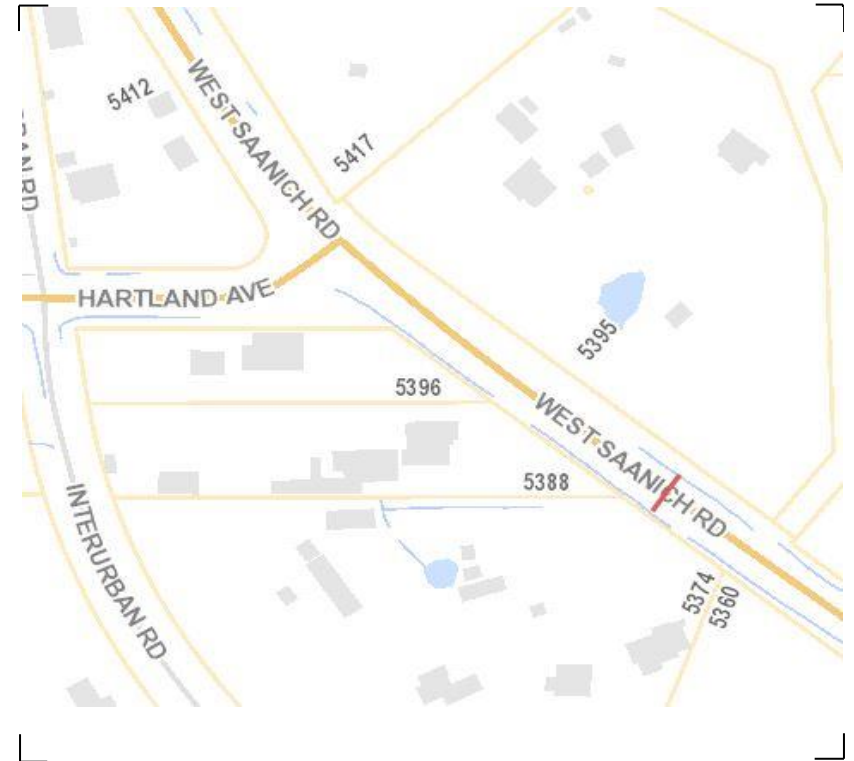
Direction: **North-South**

Dates: **March 31, 2019 To April 05, 2019**

*Filtered data*

AVG. SPEED	<b>39</b> mph	<b>63</b> km/h
50 % SPEED	<b>39</b> mph	<b>63</b> km/h
85 % SPEED	<b>43</b> mph	<b>69</b> km/h
95 % SPEED	<b>45</b> mph	<b>73</b> km/h

Location Map



**West Saanich Rd between Hartland Ave and Ave And Prospect Lake Rd**

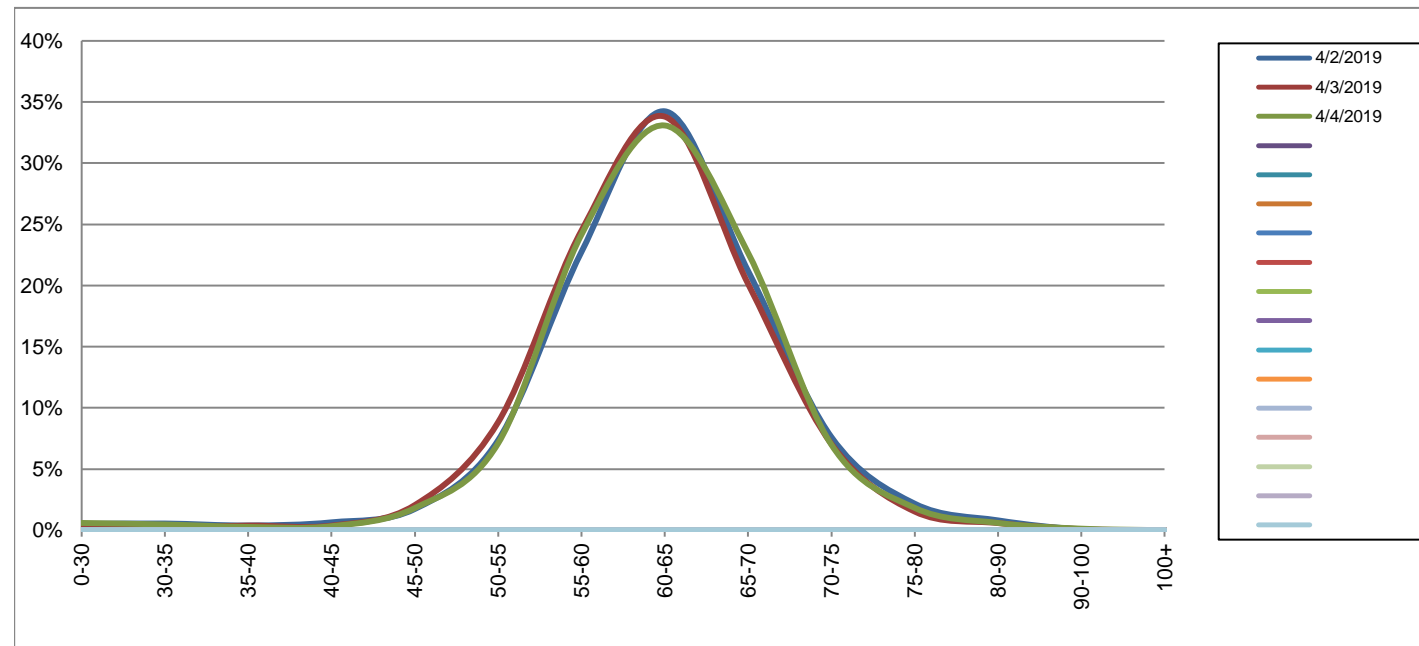
Northbound

April 2, 2019 to April 4, 2019

Daily Speed Bin Percentages														Daily Speed Bin Volumes														Total	Avg.	
Bin #	1	2	3	4	5	6	7	8	9	10	11	12	13	14	1	2	3	4	5	6	7	8	9	10	11	12	13	14	Volume	Speed
Bin Speeds	0-30	30-35	35-40	40-45	45-50	50-55	55-60	60-65	65-70	70-75	75-80	80-90	90-100	100+	0-30	30-35	35-40	40-45	45-50	50-55	55-60	60-65	65-70	70-75	75-80	80-90	90-100	100+		
4/2/2019	0.5%	0.5%	0.4%	0.6%	1.7%	7.4%	22.7%	34.2%	21.2%	7.6%	2.2%	0.8%	0.1%	0.0%	32	34	24	40	108	458	1417	2133	1320	474	135	50	4	0	6229	62
4/3/2019	0.5%	0.2%	0.4%	0.4%	2.1%	8.8%	24.5%	33.8%	20.1%	7.0%	1.5%	0.6%	0.1%	0.0%	28	13	22	22	120	516	1431	1976	1177	412	89	34	5	0	5845	62
4/4/2019	0.6%	0.5%	0.3%	0.3%	1.8%	7.1%	24.2%	33.1%	22.7%	7.0%	1.8%	0.6%	0.1%	0.0%	38	30	17	21	116	455	1549	2121	1453	448	117	38	8	0	6411	62
<b>Total</b>	0.5%	0.4%	0.3%	0.4%	1.9%	7.7%	23.8%	33.7%	21.4%	7.2%	1.8%	0.7%	0.1%	0.0%	98	77	63	83	344	1429	4397	6230	3950	1334	341	122	17	0	18485	62

**Speed Data Summary**

Bin #	1	2	3	4	5	6	7	8	9	10	11	12	13	14	Total
Bin Speeds	0-30	30-35	35-40	40-45	45-50	50-55	55-60	60-65	65-70	70-75	75-80	80-90	90-100	100+	
<b>Survey Total</b>	98	77	63	83	344	1429	4397	6230	3950	1334	341	122	17	0	18485
<b>% Total</b>	0.5%	0.4%	0.3%	0.4%	1.9%	7.7%	23.8%	33.7%	21.4%	7.2%	1.8%	0.7%	0.1%	0.0%	100%
<b>Accumulated %</b>	0.5%	0.9%	1.3%	1.7%	3.6%	11.3%	35.1%	68.8%	90.2%	97.4%	99.2%	99.9%	100.0%	100%	
<b>Inverse Accum. %</b>	99.5%	99.1%	98.7%	98.3%	96.4%	88.7%	64.9%	31.2%	9.8%	2.6%	0.8%	0.1%	0.0%	0.0%	
<b>Average Speed</b>	62 KM/H														



Site notes:

**West Saanich Rd between Hartland Ave and Ave And Prospect Lake Rd**

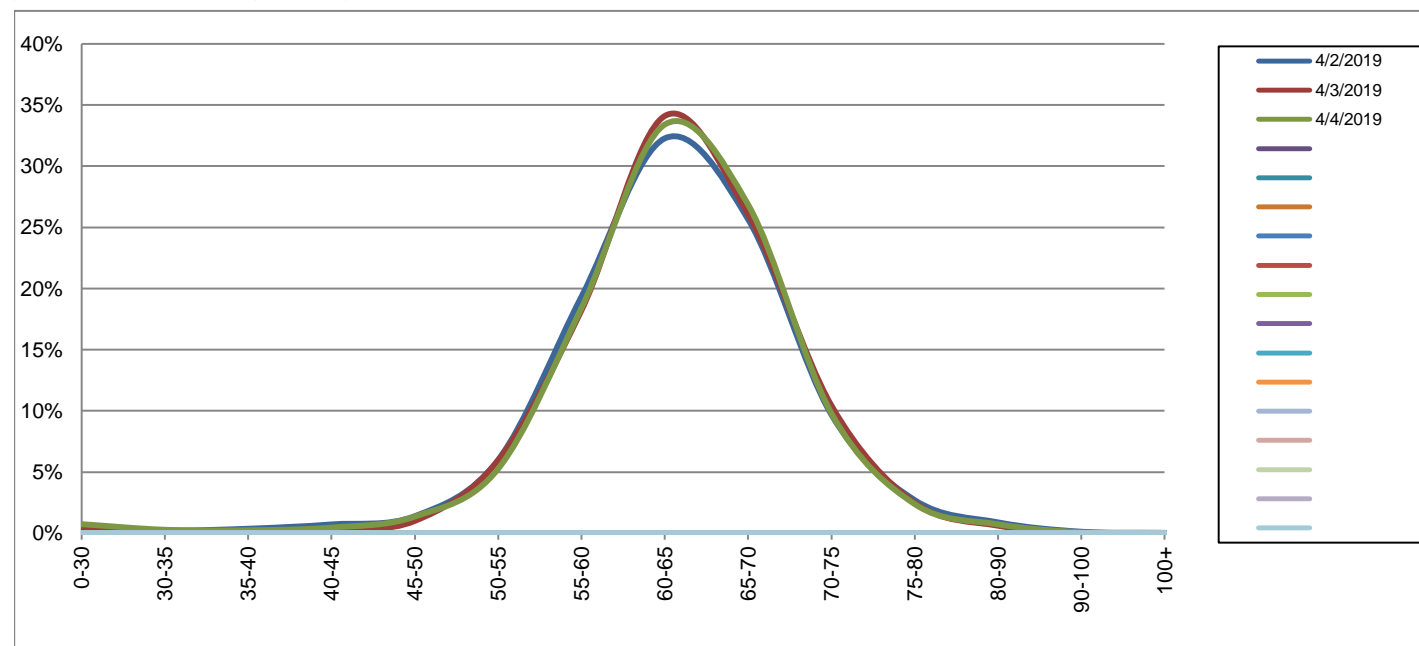
Southbound

April 2, 2019 to April 4, 2019

Daily Speed Bin Percentages														Daily Speed Bin Volumes														Total	Avg.	
Bin #	1	2	3	4	5	6	7	8	9	10	11	12	13	14	1	2	3	4	5	6	7	8	9	10	11	12	13	14	Total	Avg.
Bin Speeds	0-30	30-35	35-40	40-45	45-50	50-55	55-60	60-65	65-70	70-75	75-80	80-90	90-100	100+	0-30	30-35	35-40	40-45	45-50	50-55	55-60	60-65	65-70	70-75	75-80	80-90	90-100	100+	Volume	Speed
4/2/2019	0.6%	0.2%	0.4%	0.7%	1.4%	6.0%	19.3%	32.3%	25.7%	9.7%	2.7%	0.9%	0.1%	0.0%	40	15	24	47	91	392	1266	2114	1681	635	177	58	8	2	6550	63
4/3/2019	0.4%	0.1%	0.2%	0.3%	1.0%	6.0%	18.2%	34.1%	26.1%	10.4%	2.5%	0.6%	0.1%	0.0%	26	8	11	22	64	380	1161	2174	1662	665	158	39	4	0	6374	63
4/4/2019	0.7%	0.3%	0.2%	0.5%	1.4%	5.3%	18.4%	33.4%	26.9%	9.8%	2.4%	0.7%	0.1%	0.0%	50	19	16	31	92	356	1245	2260	1817	663	161	49	5	1	6765	63
<b>Total</b>	0.6%	0.2%	0.3%	0.5%	1.3%	5.7%	18.7%	33.3%	26.2%	10.0%	2.5%	0.7%	0.1%	0.0%	116	42	51	100	247	1128	3672	6548	5160	1963	496	146	17	3	19689	63

**Speed Data Summary**

Bin #	1	2	3	4	5	6	7	8	9	10	11	12	13	14	Total
Bin Speeds	0-30	30-35	35-40	40-45	45-50	50-55	55-60	60-65	65-70	70-75	75-80	80-90	90-100	100+	Total
Survey Total	116	42	51	100	247	1128	3672	6548	5160	1963	496	146	17	3	19689
% Total	0.6%	0.2%	0.3%	0.5%	1.3%	5.7%	18.7%	33.3%	26.2%	10.0%	2.5%	0.7%	0.1%	0.0%	100%
Accumulated %	0.6%	0.8%	1.1%	1.6%	2.8%	8.6%	27.2%	60.5%	86.7%	96.6%	99.2%	99.9%	100.0%	100%	
Inverse Accum. %	99.4%	99.2%	98.9%	98.4%	97.2%	91.4%	72.8%	39.5%	13.3%	3.4%	0.8%	0.1%	0.0%	0.0%	
Average Speed	63 KM/H														



Site notes:

**West Saanich Rd between Hartland Ave and Ave And Prospect Lake Rd**

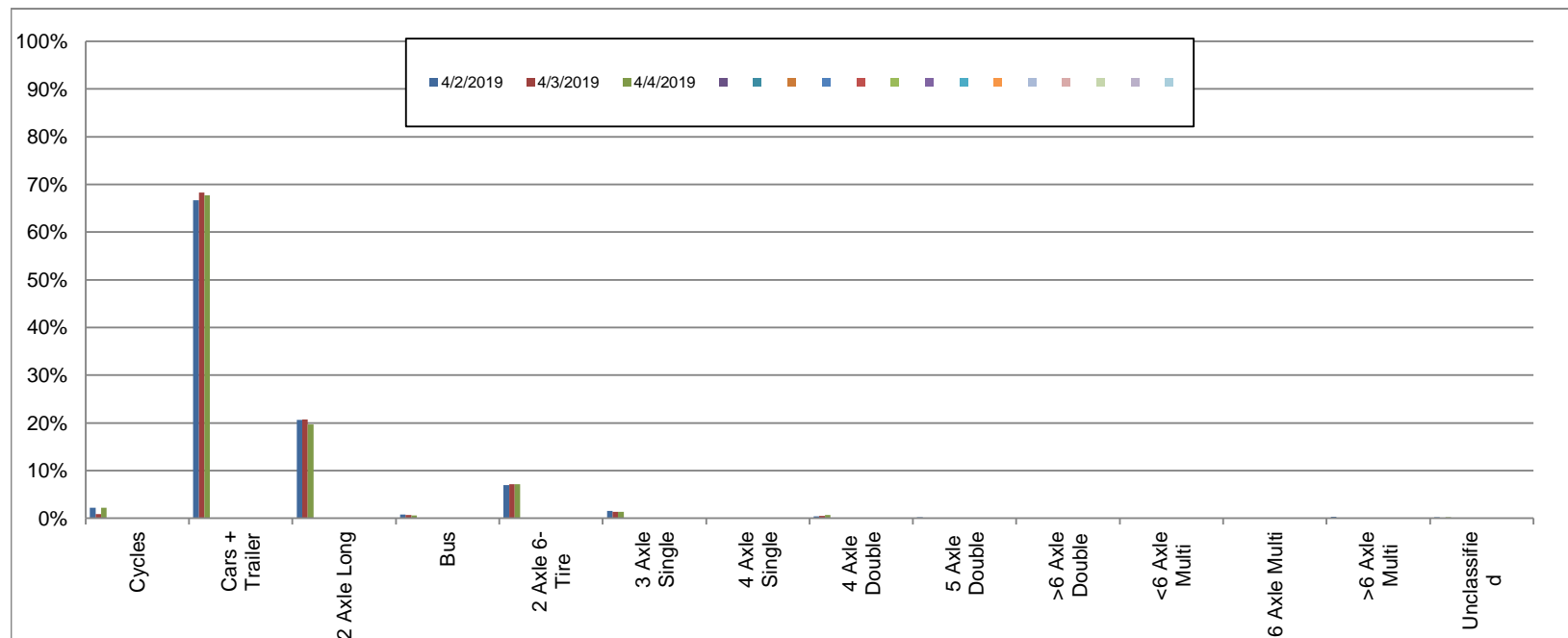
Northbound

April 2, 2019 to April 4, 2019

Daily Class Bin Percentages															Daily Class Bin Volumes														
Bin #	1	2	3	4	5	6	7	8	9	10	11	12	13	14	1	2	3	4	5	6	7	8	9	10	11	12	13	14	Total Volume
Bin Class	Cycles	Cars + Trailer	2 Axle Long	Bus	2 Axle 6-Tire	3 Axle Single	4 Axle Single	4 Axle Double	5 Axle Double	>6 Axle Double	<6 Axle Multi	6 Axle Multi	>6 Axle Multi	Unclassified	Cycles	Cars + Trailer	2 Axle Long	Bus	2 Axle 6-Tire	3 Axle Single	4 Axle Single	4 Axle Double	5 Axle Double	>6 Axle Double	<6 Axle Multi	6 Axle Multi	>6 Axle Multi	Unclassified	Total Volume
4/2/2019	2.2%	66.7%	20.6%	0.8%	6.9%	1.5%	0.0%	0.4%	0.2%	0.1%	0.0%	0.0%	0.3%	0.2%	137	4152	1283	51	432	96	2	26	12	7	0	0	18	13	6229
4/3/2019	0.9%	68.3%	20.8%	0.7%	7.1%	1.3%	0.1%	0.5%	0.1%	0.1%	0.0%	0.0%	0.0%	0.1%	51	3994	1213	38	417	76	5	30	7	6	0	0	1	7	5845
4/4/2019	2.2%	67.7%	19.7%	0.6%	7.2%	1.3%	0.1%	0.6%	0.1%	0.1%	0.0%	0.0%	0.1%	0.2%	141	4343	1261	40	460	85	5	41	8	7	0	0	4	16	6411
<b>Total</b>	<b>1.8%</b>	<b>67.6%</b>	<b>20.3%</b>	<b>0.7%</b>	<b>7.1%</b>	<b>1.4%</b>	<b>0.1%</b>	<b>0.5%</b>	<b>0.1%</b>	<b>0.1%</b>	<b>0.0%</b>	<b>0.0%</b>	<b>0.1%</b>	<b>0.2%</b>	<b>329</b>	<b>12489</b>	<b>3757</b>	<b>129</b>	<b>1309</b>	<b>257</b>	<b>12</b>	<b>97</b>	<b>27</b>	<b>20</b>	<b>0</b>	<b>0</b>	<b>23</b>	<b>36</b>	<b>18485</b>

**Class Data Summary**

Bin #	1	2	3	4	5	6	7	8	9	10	11	12	13	14	Total Volume
Bin Class	Cycles	Cars + Trailer	2 Axle Long	Bus	2 Axle 6-Tire	3 Axle Single	4 Axle Single	4 Axle Double	5 Axle Double	>6 Axle Double	<6 Axle Multi	6 Axle Multi	>6 Axle Multi	Unclassified	Total Volume
<b>Survey Total</b>	329	12489	3757	129	1309	257	12	97	27	20	0	0	23	36	18485
<b>% Total</b>	1.8%	67.6%	20.3%	0.7%	7.1%	1.4%	0.1%	0.5%	0.1%	0.1%	0.0%	0.0%	0.1%	0.2%	100%
<b>Accumulated %</b>	1.8%	69.3%	89.7%	90.4%	97.4%	98.8%	98.9%	99.4%	99.6%	99.7%	99.7%	99.7%	99.8%	100.0%	
<b>Inv. Accum. %</b>	98.2%	30.7%	10.3%	9.6%	2.6%	1.2%	1.1%	0.6%	0.4%	0.3%	0.3%	0.3%	0.2%	0.0%	



**Classification Descriptions**

Bin #	Bin Description
1	Motorcycles
2	Passenger cars, including those with recreational trailers
3	2-axle pick-ups, vans, and RVs, including those with recreational trailers
4	Buses
5	2-axle, 6-tire single units
6	3-axle single units
7	4-axle single units
8	3-axle or 4-axle double unit
9	5-axle double unit
10	6-, 7-, or 8-axle double unit
11	5-axle multiple unit
12	6-axle multiple unit
13	7-or-more-axle multiple unit
14	Vehicles that could not be classified

Site notes:



West Saanich Rd between Hartland Ave and Ave And Prospect Lake Rd

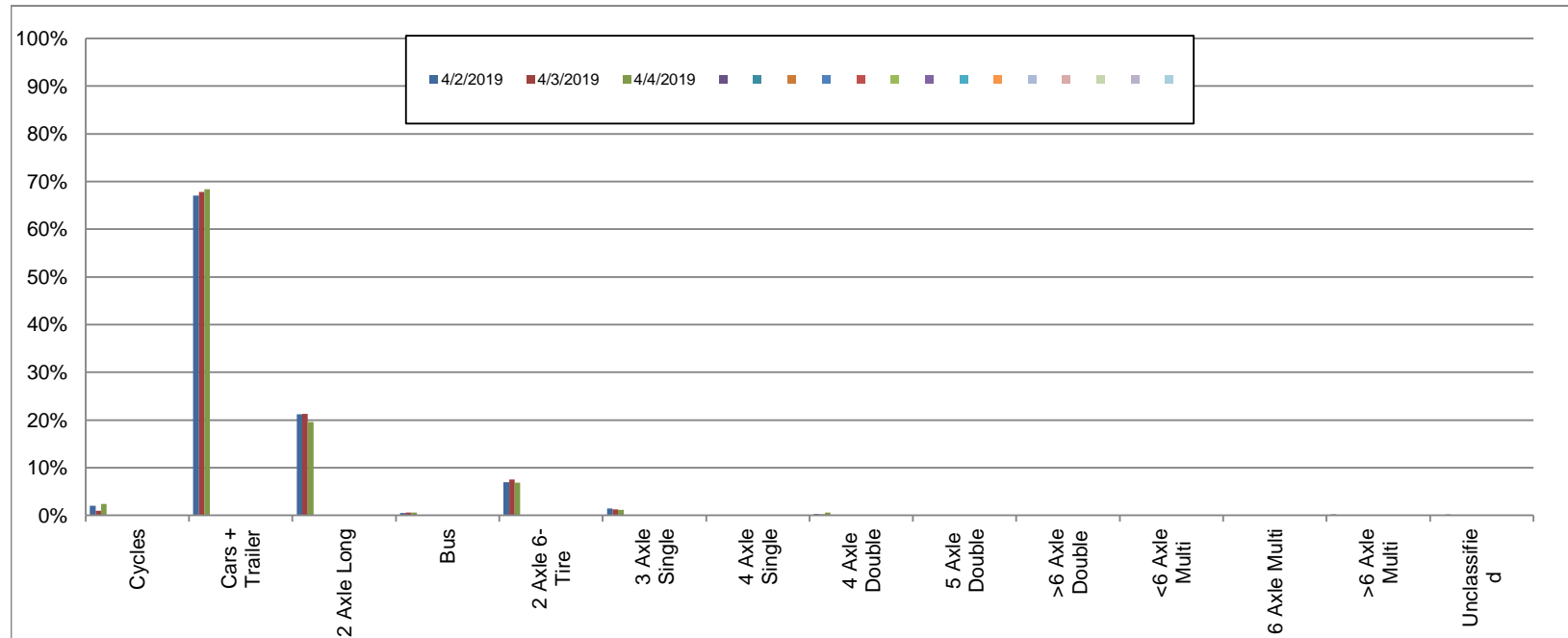
Southbound

April 2, 2019 to April 4, 2019

Daily Class Bin Percentages															Daily Class Bin Volumes											Total Volume			
Bin #	1	2	3	4	5	6	7	8	9	10	11	12	13	14	1	2	3	4	5	6	7	8	9	10	11		12	13	14
Bin Class	Cycles	Cars + Trailer	2 Axle Long	Bus	2 Axle 6-Tire	3 Axle Single	4 Axle Single	4 Axle Double	5 Axle Double	>6 Axle Double	<6 Axle Multi	6 Axle Multi	>6 Axle Multi	Unclassified	Cycles	Cars + Trailer	2 Axle Long	Bus	2 Axle 6-Tire	3 Axle Single	4 Axle Single	4 Axle Double	5 Axle Double	>6 Axle Double	<6 Axle Multi	6 Axle Multi	>6 Axle Multi	Unclassified	
4/2/2019	2.0%	67.1%	21.1%	0.5%	6.9%	1.4%	0.0%	0.3%	0.0%	0.1%	0.0%	0.0%	0.2%	0.1%	132	4395	1385	35	452	93	1	22	3	8	0	0	15	9	6550
4/3/2019	0.9%	67.9%	21.3%	0.6%	7.6%	1.2%	0.0%	0.3%	0.1%	0.2%	0.0%	0.0%	0.0%	0.0%	59	4325	1355	39	482	78	3	16	4	10	0	0	0	3	6374
4/4/2019	2.4%	68.4%	19.5%	0.5%	6.9%	1.2%	0.0%	0.5%	0.1%	0.1%	0.0%	0.0%	0.0%	0.3%	163	4627	1322	37	466	78	2	37	5	10	0	0	1	17	6765
<b>Total</b>	<b>1.8%</b>	<b>67.8%</b>	<b>20.6%</b>	<b>0.6%</b>	<b>7.1%</b>	<b>1.3%</b>	<b>0.0%</b>	<b>0.4%</b>	<b>0.1%</b>	<b>0.1%</b>	<b>0.0%</b>	<b>0.0%</b>	<b>0.1%</b>	<b>0.1%</b>	<b>354</b>	<b>13347</b>	<b>4062</b>	<b>111</b>	<b>1400</b>	<b>249</b>	<b>6</b>	<b>75</b>	<b>12</b>	<b>28</b>	<b>0</b>	<b>0</b>	<b>16</b>	<b>29</b>	<b>19689</b>

Class Data Summary

Bin #	1	2	3	4	5	6	7	8	9	10	11	12	13	14	Total Volume
Bin Class	Cycles	Cars + Trailer	2 Axle Long	Bus	2 Axle 6-Tire	3 Axle Single	4 Axle Single	4 Axle Double	5 Axle Double	>6 Axle Double	<6 Axle Multi	6 Axle Multi	>6 Axle Multi	Unclassified	Total Volume
<b>Survey Total</b>	354	13347	4062	111	1400	249	6	75	12	28	0	0	16	29	19689
<b>% Total</b>	1.8%	67.8%	20.6%	0.6%	7.1%	1.3%	0.0%	0.4%	0.1%	0.1%	0.0%	0.0%	0.1%	0.1%	100%
<b>Accumulated %</b>	1.8%	69.6%	90.2%	90.8%	97.9%	99.2%	99.2%	99.6%	99.6%	99.8%	99.8%	99.8%	99.9%	100.0%	
<b>Inv. Accum. %</b>	98.2%	30.4%	9.8%	9.2%	2.1%	0.8%	0.8%	0.4%	0.4%	0.2%	0.2%	0.2%	0.1%	0.0%	



Classification Descriptions

Bin #	Bin Description
1	Motorcycles
2	Passenger cars, including those with recreational trailers
3	2-axle pick-ups, vans, and RVs, including those with recreational trailers
4	Buses
5	2-axle, 6-tire single units
6	3-axle single units
7	4-axle single units
8	3-axle or 4-axle double unit
9	5-axle double unit
10	6-, 7-, or 8-axle double unit
11	5-axle multiple unit
12	6-axle multiple unit
13	7-or-more-axle multiple unit
14	Vehicles that could not be classified

Site notes: